



LIZOTTE CAN INSPECTION

SPECIFICATIONS

Rate up to 1200 pieces per minute

Seam inspection, foreign materials inspection or both

Seam inspection:

- Detects seaming errors:
- Droops
- Spurs
- Mis-chucks
- Knocked down flanges
- Other seaming errors

Foreign materials inspection:

- Detect foreign materials in thin cans
- Detect weight discrepancies
- Uses non-destructive soft x-ray technologie

Full parameter inspection

Automated ejection

Production report

Can provide shut down alarm to up stream equipment

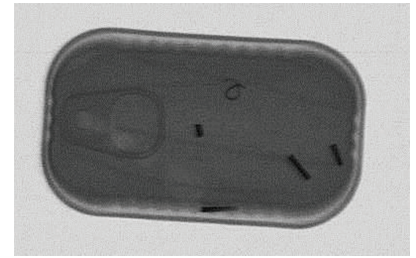
Option fully washable

Optional top-view or/and side view stations to inspect barcode, pull-tabs, over-pack, dents and other damages

The Lizotte Can Inspection machine has soft x-ray technology and six synchronized cameras to inspect tin cans allowing total quality control within a single inspection process. It process up to 1200 pieces per minute and eject cans with seaming defects and/or internal foreign materials to ensure market regulation.



Seam inspection



Foreign Material inspection

Our machine can integrate two technologies. We have the seams inspection who's ensuring that each can has a perfect seam with no imperfection. Also, we have the foreign material inspection who's ensuring that no foreign material are in the can. Our system can be sold separately for each technology or it can be combined. Has an option, this system can be fully washable.



WE CUSTOM BUILD